

Name _____ Date _____

Directions: Read each question and choose the best answer.

1. Why do you think the author wrote this book?

- Ⓐ to tell readers that animals are dangerous
- Ⓑ to tell readers how animals can be the same and different
- Ⓒ to tell readers which animals make good pets

2. Which one of these is *not* an animal?

Ⓐ a fish



Ⓑ a fly



Ⓒ a flower



Credits: top: © Jupiterimages Corporation; center and bottom:
© Hemera Technologies/Jupiterimages Corporation

Book Quiz continued on following page

Teacher Instructions: For emerging readers, read the questions to students.

Name _____ Date _____

3. All animals grow to be _____.

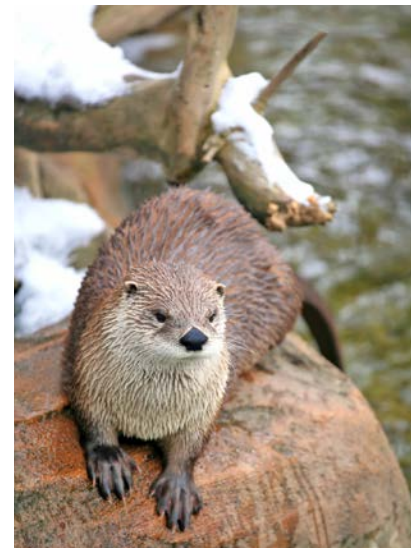
- Ⓐ long and skinny
- Ⓑ big and tall
- Ⓒ different sizes

4. What would be a good new title for this book?

- Ⓐ *Zoos of the World*
- Ⓑ *Horses, Frogs, and Spiders*
- Ⓒ *All About Animals*

5. Do animal babies look like their parents?

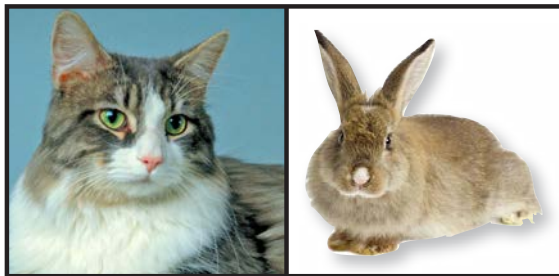
- Ⓐ sometimes
- Ⓑ no
- Ⓒ yes



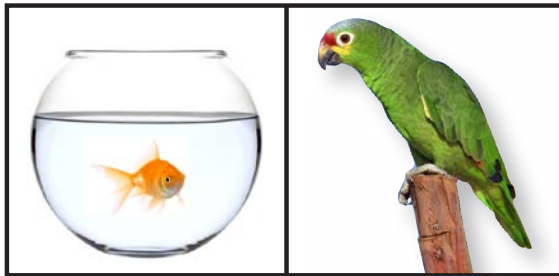
Name _____ Date _____

6. Which two animals have the same kind of body covering?

Ⓐ



Ⓑ



Ⓒ



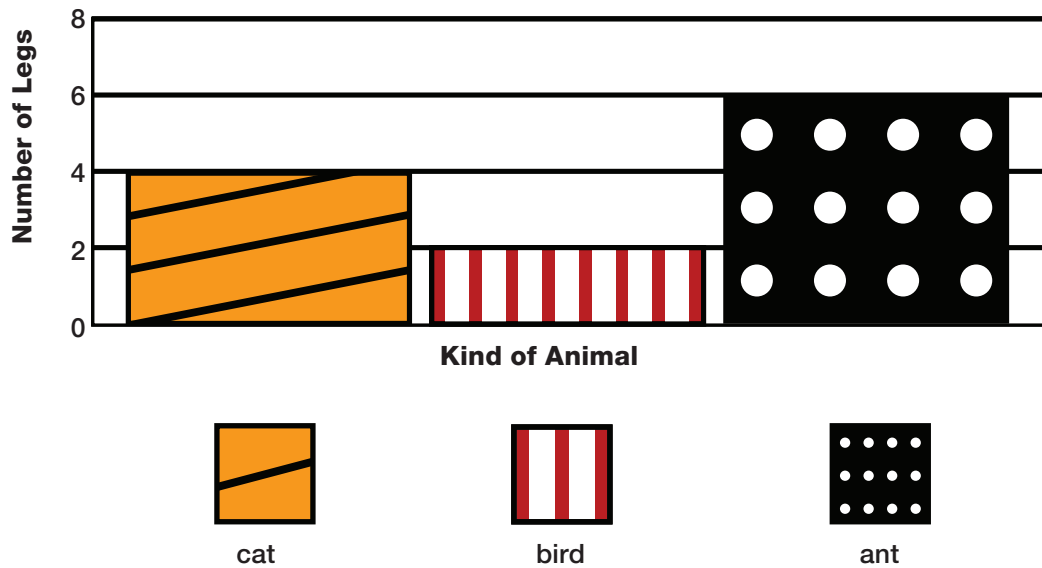
7. A chicken eats seeds, but a snake eats mice. This makes a chicken and a snake _____.

Ⓐ alive

Ⓑ different

Ⓒ alike

Name _____ Date _____

Teacher Instructions: Have students study the graph and answer question 8.

8. Which animal has the most legs?

- Ⓐ cat
- Ⓑ bird
- Ⓒ ant

9. **Extended Response:** Have students draw a dog and a fish. Under the pictures, have them write (or dictate) one way in which dogs and fish are the same and one way in which they are different.

Book Quiz Answer Sheet

		Question Type	Nonfiction Book Page Reference	ELA Comprehension Skill
1.	Ⓑ	inferential	p. 3	Make Inferences & Draw Conclusions
2.	Ⓒ	inferential	p. 15	Make Inferences & Draw Conclusions
3.	Ⓒ	literal	p. 8	Main Idea & Details
4.	Ⓒ	inferential	entire book	Make Inferences & Draw Conclusions
5.	Ⓐ	literal	p. 16	Main Idea & Details
6.	Ⓐ	inferential	p. 10	Compare & Contrast
7.	Ⓑ	literal	entire book	Vocabulary
8.	Ⓒ	data analysis	N/A	Interpret Visual Devices

9. Extended Response: Students should draw a dog and a fish and list one similarity and one difference.

- Examples of similarities may include: they are animals, they eat food, they drink water, they have homes, they have babies, they grow, etc.
- Examples of differences may include: fur/scales, lives on land/lives in water, runs/swims, has puppies/lays eggs, has legs/has fins, different tails, etc.